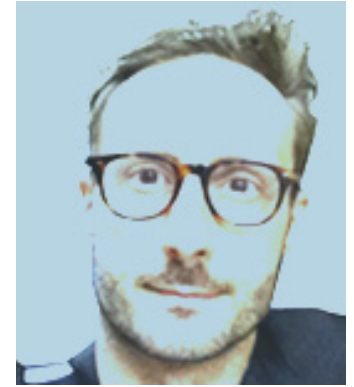


# Peter Culley, RIBA ARB CPHC



## Associations

RIBA Chartered Member No. 10691437  
ARB Registration No. 064724A  
Associate AIA  
Trained Passive House Consultant

Peter is the creative leader and founder of Spatial Affairs Bureau - an architecture, landscape, furniture and product design studio - and retains an overarching design role on each project. Central to his ethos for Spatial Affairs' work practice is being open and authentic across disciplines and scales, recognizing and embracing the limits of a scenario, bringing experts in their fields to enable rich collaborations and always allowing for experimentation. He comes from a background in cultural projects where landscape has sat hand in hand with architecture and believes firmly that one informs the other. Peter has recently completed a 1-year role as thesis instructor at University of Southern California's Master of Landscape Architecture and Urbanism program and has been Professor of Practice in the undergraduate and graduate programs at Woodbury University's School of Architecture, Los Angeles. He is a member of the UK's RIBA Visting Board for Architecture School Accreditation, and is trained as a Passive House consultant.

## Positions

2010 - Spatial Affairs Bureau Los Angeles Richmond London Creative Director, Founder  
2016 - 17 University of Southern California (USC) Thesis Instructor, Master of Landscape and Urbanism  
2012 - 16 Woodbury University School of Architecture Los Angeles Professor of Practice  
2007 - RIBA Validation Panel Visiting Board Member for the evaluation and validation of courses, programmes and examination of architecture in RIBA accredited schools in UK and internationally  
2005 - 08 Bartlett School of Architecture, University College London diploma Course Tutor w. Christine Hawley  
2002 - 04 Designs on Britain Steering Group Member, initiative bringing architectural dialogue to under 18s  
2000 - 2011 Rick Mather Architects / Rick Mather USA London, New York, Richmond VA Associate Partner  
1997 - 2000 Kathryn Gustafson / Gustafson Porter London Project Architect  
John Lyall Architects London Project Architect  
1997 Battle McCarthy Consulting Engineers London Architectural Assistant  
1993 Rocco Design Hong Kong Architectural Assistant  
1992 -03 John McCall Architects Liverpool Architectural Assistant  
1996 - Visiting critic and / or lecturer at Woodbury University, Burbank CA; Bartlett School of Architecture, UCL; University of Southern California, Los Angeles; London Metropolitan; University of Westminster; Chelsea School of Art; University of Nottingham; Sci-Arc LA; Yale School of Architecture; University of Virginia; Virginia Polytechnic Institute and State University

## Architectural Education

1994 - 96 Bartlett School of Architecture, University College London Dip. Arch.  
1989 - 92 School of Architecture, University of Liverpool BA Arch (Hons)

# Peter Culley

## Projects

2010 -	Spatial Affairs Bureau	
	<i>Crosstown Concourse</i> Memphis TN	
	various projects for 1.5 million sqft 16 acre Sears Distribution Center:	2017
	<i>Crosstown Arts Space</i> galleries, art making facilities, offices, retail, café and bar	2017
	<i>BridgePark</i> Richmond VA 2 mile ped / cycle route from State Capitol across James River	in design
	<i>Metropolitan Museum of Art</i> NY NY Furniture Design for Breuer Building / Great Hall	ongoing
	<i>Metropolitan Museum of Art Plaza</i> NY NY (with Olin)	2015
	<i>TBWA/Chiat/Day</i> Los Angeles 'Walled City' masterplan, refurb and furniture	ongoing
	<i>Round Hill Pavilions</i> Orange VA Pavilions and Landscape (AIA Honor Award)	2014
	<i>Crosstown Theater</i> interior architecture for 450 seat concert / performance venue	in construction
	<i>SunTrust at Crosstown</i> experimental new banking concept	2016
	<i>Jacobson Residence</i> Echo Park CA two house and garden remodel	in construction
	<i>Hall Residence</i> Echo Park CA house and garden remodel	in design
	<i>Bouverie Mews</i> London house, workplace, gallery and courtyard garden for an artist	in construction
	<i>Venice Bachelor Beachhouse and Garden</i> CA	2015
	<i>Pear Street Passive House Condominiums</i> - 16 story tower and landscape (unbuilt)	2012-2014
	<i>Charmian Residence and Garden</i> Richmond VA	2012
	<i>Sears Crosstown Micro-City Concept Study</i> Memphis TN	2011
	<i>Crosstown Masterplan Feasibility Study</i> Memphis TN	2011
	<i>William Eggleston Museum Study</i> Memphis TN	2010, 2017
	<i>Highland Hotel Study</i> Marfa TX (unbuilt)	2010
	<i>West Strand Sea Villas</i> Portrush Northern Ireland (unbuilt)	2010-12
	<i>Aga Khan Museum</i> Toronto ON consultant	2011-12
	<i>Montauk Residence</i> Montauk NY feasibility (unbuilt)	2010-11
2000 - 2011	Rick Mather Architects, Rick Mather USA	
	<i>Virginia Museum of Fine Arts Richmond VA</i> various projects:	
	<i>Masterplan</i>	2001
	<i>Expansion and Renovation and Parking Deck</i> (Rick Mather + SMBW)	2010
	<i>Sculpture Garden</i> (Rick Mather + SMBW; Olin)	2011
	<i>South Bank Centre</i> London site wide masterplan	2000 - 2011
	<i>Hungerford Bridge Restaurant and Riverside Improvements</i>	2008
	<i>Natural History Museum Masterplan</i> London	2008
	<i>New York Public Library Expansion</i> : finalist, invited competition	2010
	<i>American Museum of Natural History expansion</i> NY NY finalist, invited competition	2011
1997 - 2000	Kathryn Gustafson / Gustafson Porter	
	John Lyall Architects London	
	<i>Crystal Palace Park</i> London architecture and landscape masterplan and Phase 1	2000
	<i>National Botanic Garden of Wales, Great Glass House Internal Landscape</i>	2000
	<i>Westergasfabriek</i> City Park Amsterdam	2001
	<i>Hammersmith Pumping Station</i> London	1998
1996 - 1997	Battle McCarthy Consulting Engineers London	
	<i>Greenwich Millennium Landscape and Environmental Masterplan</i> London	1997
	<i>Peckham Library Sustainability Strategy</i> London	1997
	<i>M&amp;G Saatchi Headquarters</i> London Atrium Roof Structural Design	1997

## Awards

- 2014 AIA VA Chapter, Honor Award for Design Excellency in Contextual Design  
'Round Hill Pavilions' Spatial Affairs Bureau
- 2011 Lubetkin Prize Shortlist, RIBA International Prize  
'Virginia Museum of Fine Arts' Rick Mather + SMBW
- 2010 AIA Virginia Society Excellence in Architecture Award  
'Virginia Museum of Fine Arts' Rick Mather + SMBW
- 2008 InLight: Juror's Award for Best in Show, People's Choice Award  
'Light House\_1: Jackson Ward' Spatial Affairs Bureau
- 2004 Civic Trust Award, RIBA Award  
'Southbank Centre Masterplan' 'Royal Festival Hall' Rick Mather Architects
- 2003 Architectural Review / MIPIM Future Projects Award  
'Virginia Museum of Fine Arts' Rick Mather + SMBW
- 2000 Natural Stone Awards, Best Interior Project  
'National Botanic Garden of Wales' Gustafson Porter
- 1993 First Prize, Seattle Commons Park Competition  
Peter Culley and Rachel Stevenson

## Recent Press

- 2015 RVA News August 6 'BridgePark, It's Out There' Susan Howson  
NBC12 June 18 - BridgePark news feature  
Style Weekly June 16 'As the Bridge Turns' Ed Slipek, BridgePark feature  
A+D Magazine April 25th, Metropolitan Museum Guard House feature
- 2014 Topos Magazine 'David H. Koch Plaza at the Metropolitan Museum of Art'  
Richmond Times Dispatch June 30 - 'A river, a bridge, a park, the vision lives', Randy Hallman  
Architecture Richmond June 23 'In support of Pear St', Don O'Keefe

## Exhibitions

- 2016 The New Walled Cities and Hinterlands Santa Monica Art Studios with Berenika Boberska
- 2015 Open Laboratories WUHO Gallery, Hollywood May - August, group show
- 2008, 2010 Light House\_1: Jackson Ward, installation, Richmond VA

## Selected Publications

- 2015 Mayor's Sustainability pLAN Los Angeles: photographic content
- 2015, 2016 Astronomical Diaries Nanuka Tchitchoua: forword, volumes I and II
- 2015 The New Walled Cities and Hinterlands Paper with Berenika Boberska, Pub by Changing Cities II
- 1999 The National Botanic Garden of Wales Andrew Sclater, Harper Collins: contributing author